



Geomagic Freeform



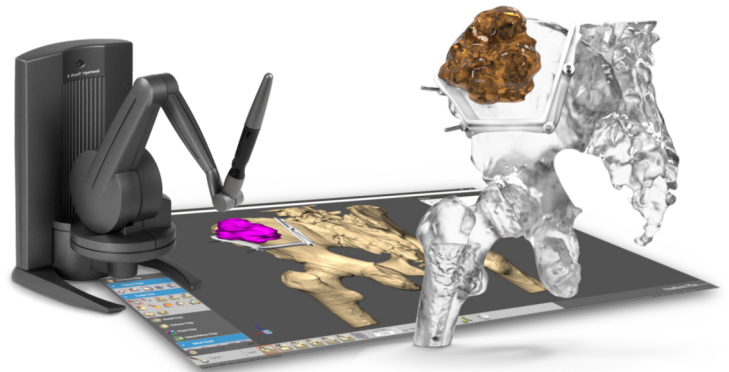
Geomagic Freeform Plus

What's New for Geomagic Freeform 2022?

Geomagic Freeform® is 3D design software that—combined with touch-based haptic devices—transforms traditional handcraftsmanship into organic, digital design for custom manufacturing. We developed and continue to evolve this software to help you solve complex design challenges.

You can trust Freeform to:

- Create manufacturable sculpted designs, especially products that precisely fit the human body.
- Add aesthetic and functional details that are difficult or impossible in traditional CAD.
- Ensure designs are ready for additive, subtractive, or formative manufacturing.
- Transition from handcrafting to digital design with an intuitive haptic interface.

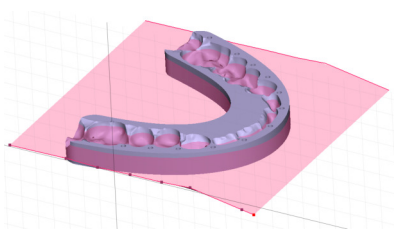


Simple. Fast. Precise.

Geomagic Freeform® 2022 is more comprehensive than ever before. New capabilities are designed to optimize your existing workflows, enabling faster and more precise model creation. It is part of our company-wide focus on improving productivity since more efficient processes help save time and money. This latest software version allows you to:

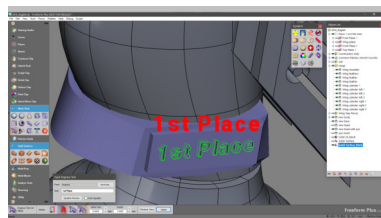
- Work more efficiently with mesh objects
- Access new design tools for additive and traditional workflows
- Reduce the need to use external software

New features and enhancements include:



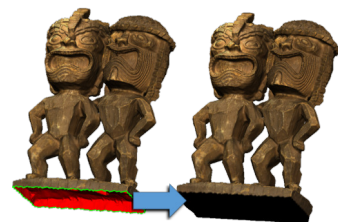
Split Piece

Divide mesh and clay pieces quickly and efficiently with this new tool.



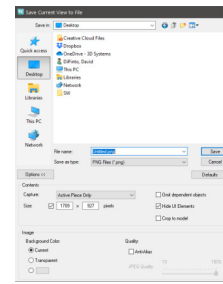
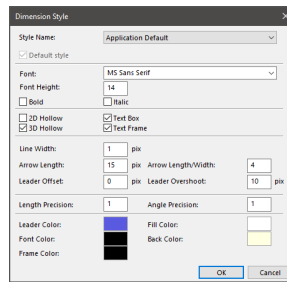
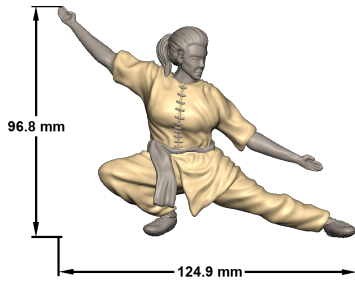
Enhanced Mesh Engraving/Labeling

Place labels faster and easier with the projection mode for text and DXF engraving.



Extrude Open Boundary in Mesh

Select an open boundary on a mesh piece and extrude new geometry from the edges.



Create CAD-style Measurements

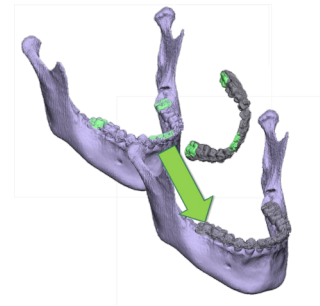
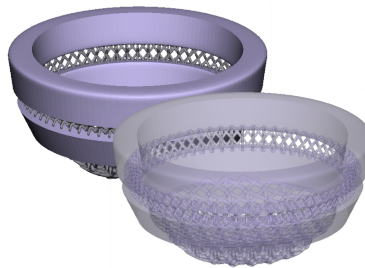
Quickly add CAD-style measurements to your designs and capture informative screenshots for reviews.

Create Custom-style Measurements

Design and save custom styles with the ability to display on-screen measurements.

Save View(s)

Improve efficiency and get quick access to settings such as anti-aliasing settings, background handling and options for naming.



Shrink Wrap

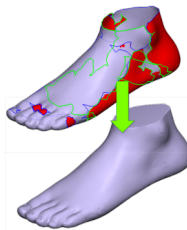
Create a single watertight mesh, repair gaps, remove internal structures and more with our new shrink wrap feature.

Mesh Merge

Combine multiple mesh pieces into a single piece and keep the individual shells without performing a Boolean operation

Register by Region

Make independent selections per piece for alignment with our new intelligent selection mode.



Reduce

Improve the decimation quality of meshes and retain sharp edges.

Both images above were reduced to 90%, one using the default setting (left) and the other the new CAD setting (right).

Mesh Repair

Fix issues without disturbing surface features with the new mode of the Analyze and Repair tool created for CAD style models.

Mesh Offset

Raise or lower the surface of the mesh along the surface's normal direction. Use the smoothing option when offsetting the entire piece.

* The Geomagic Freeform family of products is not a medical device. Neither Oqton nor 3D Systems make any claims that the Geomagic Freeform family of products are intended to treat, plan or diagnose. However, there is evidence and publicly available research that indicates many customer are successful using a product from the Geomagic Freeform family in their healthcare related workflows. Such users are responsible themselves to ensure all applicable regulatory requirements are followed.

Get In Touch

Contact us for a demo at hello@oqton.com



© 2022 by Oqton, Inc. All rights reserved. Specifications subject to change without notice. Oqton is a registered trademark of Oqton, Inc. Geomagic and Freeform are registered trademarks of 3D Systems, Inc. All other trademarks are the property of their respective owners.

22V2 © 2022, Oqton